



The Muni News

September 2003 | Volume 93, Issue 1

Muni League Candidate Evaluations In Full Swing

Sandra Driscoll

It's silly season again — that time when candidates are knocking on doors, attending gatherings, and wooing voters. The Municipal League Candidate Evaluation is a major stop along the way to the September 16 primary.

This year, over 60 Municipal League volunteers have interviewed, evaluated and rated 150 candidates for local office, including city councils, County Council, port commissions, school boards, the County Assessor, the Monorail Authority board, and judicial races.

The Municipal League Candidate Evaluation Program seeks to objectively determine if the candidate is qualified and knowledgeable enough to effectively represent the citizens.

Ratings are based on four criteria:


1. **INVOLVEMENT:** What has the candidate done in family, neighborhood, community, work or volunteer life that prepares her or him for the position?
2. **EFFECTIVENESS:** Has the candidate shown the ability to work productively with others?

3. **CHARACTER:** Do the candidate's personal traits show the ability to take on the responsibilities of the office she or he seeks?

4. **KNOWLEDGE:** Has the candidate demonstrated the willingness and ability to learn and adapt?

Every candidate for each office is invited to respond to a candidate questionnaire and attend a committee interview. Volunteers donate endless summer days and nights to compile information on each candidate. They then interview the candidate using a set of core questions designed to elicit information pertinent to our four criteria.

The result is a Municipal League rating of Outstanding, Very Good, Good, Adequate or Not Qualified. We do not compare candidates to one another; each candidate is rated individually. The League's ratings represent the only nonpartisan evaluation process in King County.

The Municipal League wants good leaders working in government. This only happens with an active, informed citizenry. The candidate evaluation program provides an avenue to make this goal a reality. 

**Coming Soon:
The Municipal
League of King
County's
2003
Voter's Guide!**

Inside Muni News:

From the Chair	2
Elections Oversight	2
Civic Award Winners	3
Global Affairs	4
Ballot Measures	4
Nominations News	6



Reflections from the Chair of the Municipal League

Putnam Barber



“Will the Municipal League endorse our City Council candidate?” “How can we get the League’s endorsement?”

Campaign managers and candidates frequently ask these kinds of questions.

Here’s our answer: Sorry, no, we don’t endorse candidates for

political office. Then we explain that, instead, we *rate* candidates. It’s a distinction that’s worth explaining.

Regardless of their position on issues, the League rates candidates on their capacity to govern, not their political views.

- Bring attention, knowledge and creativity to address complex public issues and the office sought

If the candidate cannot demonstrate the necessary skills and knowledge to serve their community well, the League bestows a “Not Qualified” rating.

Another volunteer group examines the fine points of upcoming ballot initiatives. Often the Ballot Issues committee suggests that the League should not take a ballot position. But when the issue affects the quality of government in King County, the committee researches the initiative and interviews people who support and oppose the proposal. In that case, the Municipal League takes a position. It takes a two-thirds majority of the board to do this, and the League announces its conclusion, sometimes joining forces with others to inform voters.

These two League activities are completely independent of each other. For example, history shows that the League has given an “outstanding” rating to candidates who strongly support an initiative the League urged voters to oppose. The candidate rating process aims to bring effective leaders into government. The Ballot Issues committee focuses on advising voters to make the best choice about a specific ballot initiative.

The Municipal League wishes to thank all the volunteers and supporters who work so hard to empower citizens to make informed election choices. 🙌

“The Municipal League wishes to thank all the volunteers and supporters who work so hard to empower citizens to make informed election choices.”

Candidate responses to our questions guide the League’s ratings — from “Outstanding” to “Not Qualified.” You might be surprised to learn that every candidate in a race can earn the “Outstanding” rating from the Municipal League. King County citizens would be fortunate if every candidate running for office earned an outstanding rating from the Municipal League. Often, many candidates in the same race earn “Outstanding” or “Very Good” ratings. The Municipal League sees this positively, as a sign of a healthy political process.

To create the ratings, volunteers carefully research the public record and listen to each candidate during face-to-face interviews. The League looks for strength and promise in four areas: involvement, effectiveness, character and knowledge. To be rated “outstanding,” the candidate should demonstrate that they:

- Possess the required skills related to the office
- Are a path-finding leader who moves people and processes toward workable solutions
- Garner recognition and respect appropriate to the responsibilities of campaigning and political office

AJ Culver to Represent Muni League on Elections Oversight Committee

Lucy Steers

In the past two elections, late mailings of absentee ballots revealed serious problems within King County’s elections office. The King County Council recently convened a nine-person Citizens’ Oversight Committee to address these problems. The County invited both the Municipal League and the League of Women Voters to provide a representative to serve on the committee.

Putnam Barber selected **AJ Culver**, retired Issaquah City Councilmember and longtime Municipal League boardmember, to represent the League on this body. The committee will oversee the 2003 primary and general elections, review the reports on past problems, and report back to the Council. 🙌

44th Annual Civic Awards Recognize Outstanding Individuals, Organizations

Mark Troxel



Sam Whiting, Executive Director of Page Ahead Children's Literacy Program

The Municipal League honored those who have made outstanding contributions to our community at its 44th annual Civic Awards Luncheon. Civic Award winners are the citizens, officials and organizations who lead by example, working hard to improve the quality of life in our region. They come from a variety of backgrounds and professional disciplines, but their achievements reveal a shared combination of commitment, innovation and energy, all harnessed in the service of others. This year, the following individuals and organizations were honored:

Citizen of the Year: Sheila Espinoza

Sheila Espinoza demonstrates how dedication to the arts and to the community can inspire others to pitch in and solve a problem. Among other contributions, Ms. Espinoza has patrolled her neighborhood to clean up graffiti and provided transportation to homebound senior citizens. She founded the Pontiac Bay Symphony Orchestra, a mentoring orchestra offering free participation for adult and youth musicians in Seattle.

Public Employee of the Year: Joy Sakamoto Barker

Joy Sakamoto Barker is Dean of Basic Education at Renton Technical College. As an advocate for adult literacy programs such as Adult Basic Education and the General Education Diploma, Joy has delivered on the dream of an educated public, which is fundamental to good citizenship and economic opportunity.

Organization of the Year: Page Ahead Children's Literacy Program

Page Ahead Children's Literacy Program provides reading activities and new books to at-risk children, linking corporate philanthropy with social needs activism. Formerly known as Books for Kids, a project started by participants in Leadership Tomorrow, Page Ahead Children's Literacy Program has given away, as of 2003, more than one million books.


Governmental News Reporting of the Year: Paul Guppy

Paul Guppy has consistently contributed to the quality of public discourse over several years with clear research and a strong editorial voice through the Washington Policy Center, a new media resource.

James R. Ellis Regional Leadership Award: William Gates, Sr.

William Gates, Sr. brings valuable and credible leadership to the examination of Washington state's tax structure. Throughout a respected legal career, he has played a prominent role in our region's civic affairs, and now serves through the Bill and Melinda Gate Foundation dedicated to education and global health.

Doug Mason Memorial Award: Mary Larson

Mary Larson brings a uniquely valuable combination of the "healing arts" to the homeless population she serves as a nurse at the Pioneer Square Clinic. As an artist and a nurse, her innovative and inspired philanthropy reawakens half-dead souls through lively portraiture, and proceeds from her art supports, in creative ways, the clinic administering to their medical needs. 

Fall Membership Drive

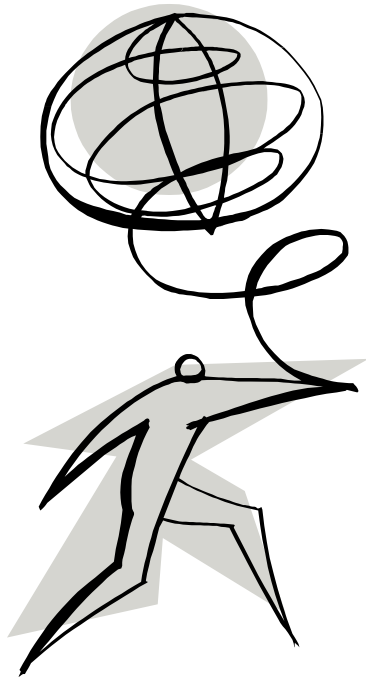
The Municipal League Membership Committee, chaired by Norma Jean Hanson, will soon begin their fall campaign to recruit new members. If you are a current Muni League member, please contact Norma Jean at 206-622-8333 with the names and addresses of King County individuals, businesses, or organizations who would make excellent additions to the Municipal League.

And don't forget to renew your own membership — we need everyone's support to build an engaged, informed community!

Nominate someone for the 2004 Civic Awards! Nomination Form included in this issue of Muni News.

Sharing Political Views Across the Globe

Putnam Barber



Several times a year, delegations of government officials, journalists, nonprofit organization leaders, and other citizens from foreign countries visit Seattle. Most often, they participate in cultural exchange tours organized by their own governments or the U.S. State Department.

Staff working for the World Affairs Council here in Seattle organizes itineraries for these visitors that include meetings with elected officials, sightseeing, and often times, a conversation about the mission and programs of the Municipal League.

Recently League members met visitors from Indonesia, Japan, Tajikistan, Holland, Australia, Thailand, and Tanzania.

These visits are always interesting and the conversations are sometimes

challenging. Our political institutions – and the roles played by the Municipal League and other public interest groups – often seem very extraordinary to visitors. Frequently, their view of the U.S. is incomplete and sometimes biased by media.

Although most of the recent visits occurred with Trustees of the League, all League members are invited to participate. If you would like to be on a list to be notified when a visit is being scheduled, send an email to Put Barber, Chair, at chair@munileague.org or call the office.

It's not quite the same as a cruise on the *QEII*, but you will get a chance to talk serious politics with some people from across the globe. 🗺️

League Committee Evaluates Diverse Ballot Measures

Lucy Steers

Elections are upon us, and the Municipal League's Ballot Issues Committee is busy evaluating five ballot measures that could appear on the ballot this year:

- I-77 (the Latte Tax Initiative)
- Seattle's Fire Facilities levy
- Charter amendments requiring election of council members by district
- Charter amendments requiring election of council members by proportional representation
- Countywide measure to build a monorail in non-Seattle areas of the county.

Although uncertainty exists about what will appear on the ballot, the committee is working hard to evaluate all measures identified by the Board. The committee will follow its customary procedure of hearing both "pro" and "con" measures, then evaluating all available information before forwarding a recommendation to the Board. Both the committee and the Board need a 2/3 supermajority to meet our standing rules for valid decisions. Watch for the outcome of all this work when the Board submits its recommendation to the voters in our Elections report. 🗺️

thank you

Antioch University ■ Bellevue Downtown Association ■ Peter Clarke & In Your Own Words ■ Davis Wright Tremaine ■ The Essential Baking Company ■ Graham Dunn ■ King County Bar Association ■ Qwest ■ Renton Housing Authority ■ Safeco Corporation ■ Safeway ■ Seattle Post-Intelligencer ■ Stoel Rives ■ University Village QFC ■ Whole Foods Market ■ and especially the

CEC VOLUNTEERS

for making the 2003 Candidate Evaluation Program a success!
We couldn't have done it without you!

Municipal League of King County Membership (Board of Trustees in bold)

Richard Albrecht	David Copley	Ethel L. Holmes	Evan Oakes	Leonard Shrock
Tom Albro	George W. Corley	David Hopkins	Robert W. O'Connor	Arthur Siegal
Tim Allen	Michael S. Courtnage	William G. Horder	Rud Okeson	Kirvil Skinnarland
Alan R. Anderson	Donald J. Covey	Jay Horstman	Howard M. Olsen	Helen L. Smith
Janet R. Anderson	Tom Curran	William Howard	Donald A. Olson	Larry J. Smith
Kathleen Anderson	Allen E. Davenport	Katherine C. Howard	Katherine Olson	Pamela K. Snoddy
Beth M. Arman	Aubrey Davis	Kathy S. Hubenet	Mildred C. O'Neal	Jonathan Solomon
Jay Arnold	John M. Davis	Victor E. Hugo	Hans O. Orth	George Soltman
Deidre Arntz	Scott Davis	Wendell P. Hurlbut	A. Talcott Ostrander	Helen Sommers
Jim Austin	James A. Degel	Chris Hurst	Philip Padelford	Sunny Speidel
Jeffrey Ballaine	Paul B. Demitriades	Fred Jarrett	Thomas R. Page	Harry Spizman
A.S. Ballinger	Brewster Denny	Stuart Jenner	Margaret Pageler	Patricia Stambor
David Bangs	Oscar Desper	Douglas Johnson	Robin Pasquarella	Susan Stead
Putnam Barber (Chair)	Kathy Detlofsen	Gerry Johnson	Frank Pattison	Lucy Steers (Vice Chair)
Mark Barbieri	Thomas Ditty	Harvey Johnson	Ancil H. Payne	Peter Steinbrueck
Joy S. Barker	Mary Donovan	Lewis H. Johnson	Russell R. Pearson	Elcena Steinmann
Cynthia Bascomb-Jones	Sandra Driscoll	Bruce Jones	Otis Pease	Alexander Stevens
Marky Barrett	William Dunlap	Barbara P. Kaiser	E. D. Peasley	Helen B. St. John
William A. Beck	Susan A. Eisele	Robert Kaplan	Henry E. Perry	Linda K. Stores
Jack A. Benaroya	Helen G. Eisenberg	Jennie Keith	Lillian Perry	Mary Ann Suino
Sue Bennett	Katherine Elias	Jacqueline Kim	Judith Peterson	Donald Swanson
J.E. Beardsley	James R. Ellis	Robert S. Klein	Barbara Peterson	Harold Taniguchi
Doug Beighle	H. Stuart Elway	Susan Kretz	Julie Peterson	David Tashes
C.G. Bergman	Lowell H. Ericsson	Bruce Laing	J. W. Phillips	Kate Tate
J. T. Bernard	Neil Ericsson	Colleen Laing	Jennifer M. Piccolo	Diane E. Tebelius
Stephen R. Black	Brenda Etter	Phyllis Lamphere	Kathleen Pierce	Brian Thomas
William M. Black	Jean Burch Falls	Tammy Landburg	Charles Pigott	Joan K. Thomas
J. Arthur Blakeney	Barry A. Feder	Karen Lane	Mary H. Pinkham	David Thomley
Alan Bluechel	John B. Florance	Kerri Lauman	Judy Poll	David O. Thompson
John A. Bodoia	Keven Franklin	Beverly LaVeck	R. Alex Polson	Michael J. Thompson
Elma Borbe	Diana H. Gale	Jeanne Marie Lee	Barbara A. Powell	Phillip A. Thompson
Jill D. Bowman	William H. Gates	Michael A. Leff	Harry Prior	F. Theodore Thomsen
Patricia Bowman	Shirley A. Gaunt-Smith	Emily A. Leslie	Frank A. Pritchard	Donald L. Thomson
Allan Boyce	Thomas Gaylord	Margaret Lingle	Harry Pryde	Dean D. Thornton
Bruce Bradburn	Robert M. Goldstein	Craig Lorch	Helen K. Pulsifer	David Towne
Lael E. Braymer	Donna Gordon	Lonnie Lusardo	Rosemary Purcell Burkhart	Mark Troxel
Herb Bridge	Gretchen N. Gould	Richard Lynch	Michael Purdy	Henry A. Tucker
Janice C. Bristol	Marc Greenough	Jocelyn Marchisio	William Quan	Wes Uhlman
Janice C. Bristol	Allison Griffin	Arthur Maronek	Mike Ramey	Keith Vanderzanden
Rita Brogan	D. Paul Grindall	Richard S. Marshall	Thomas M. Rasmussen	William Vandeventer
Steven D. Brown	Linda B. Haas	Steve Marshall	James Reckers	Loretta Vosk
Mary E. Browne	Eleanor M. Hadley	Tyler R. Matthew	Jay Reich	Richard L. Wagner
M.J. Buckley	Jane Hague	Barbara J. Mauer	Phil Renshaw	Joan Waldo
Nancy Burkhalter	Helen Haladyna	Tom McArthur	Randy Revelle	Walter Walkinshaw
Steven H. Butler	Eleanor T. Hall	Mary McCumber	R.E. Richards	George Wallerstein
David Byers	Shirley L. Hall	Dan McDonald	Barbara J. Ries	Marilyn Ward
Alice Byers	John C. Hamer	Margaret McGrath	Richard J. Robbins	Jared Watson
Alta G. Campbell	David Hamlin	Gloria Miller	Robert Roberts	R. D. Watson
Suzanne Carlson	Norma Jean Hanson	R. J. Moulton	John M. Rose	Robert Denny Watt
Bruce Carter	Helena R. Harper	Richard E. Monroe	David Russell	Griffith Way
Kevin Carter	John Hay	Teresa Moore	Joe Sakay	Michael J. Wensman
Heidi A. Carpine	Stuart Heath	Harold Mozer	Ann Sandstrom	Mary Wheeler
John L. Chadwick	William A. Helsell	J. Shan Mullin	George S. Schairer	Bruce W. Williams
Stephanie Cirkovich	Kate Hemer	Rob Neate	Charles H. Schiff	J. Vernon Williams
John A. Clark	Susan B. Hempstead	Tracey Neate	David Schooler	Scott White
Peter Coates	Fred Herzberg	Ronald Nece	Ruth Schroeder	Barbara S. White
John Cockburn	Jerome L. Hillis	Scott Noble	Leah D. Schulz	Geoffrey Yarema
Richard Cole	Rowan Hinds	Charles Nordhoff	John A. Schwager	Anne Zubko
Theodore Collins	Claudia Hirschey	Joe Norman	Monica P. Scott	
Christopher K. Cooper	Susan D. Hoffman	Lois H. North	Daniel Seligman	
Lucy Copass	Doxie Hogue	Frances Anne Nostrand	Allen E. Senear	





**810 Third Avenue
Suite 224
Seattle, WA 98104-1614**

206-622-8333 phone
206-686-3505 fax
muni@munileague.org
<http://www.munileague.org>

Trustee Nomination Updates

Nominating Committee Seeks Nominations to Board of Trustees

Every year, the Municipal League of King County invigorates its existing board of trustees by voting for new trustees. The board also considers and votes on requests by trustees wishing to return for another term. This annual election takes place each November, and the League is seeking interested board members right now.

If you want to serve on the board of this great organization — or if you know of someone who may be interested — please contact us at 206-622-8333. A Nominating Committee member will follow up and provide additional information.

Notifying Members about Nominations

Municipal League Bylaws and Standing Rules require that the membership be notified of the entire slate of board nominees at least 40 days prior to the election of trustees. The Standing Rules further require that the membership vote for or against the entire slate. The 40-day requirement has consistently been difficult to meet for the entire slate because one or more desirable candidates are unable to confirm in time that they are able and eligible to serve. At the recommendation of the Nominating Committee, the board approved amendments to the Standing Rules that would enable League members to vote for or against individual nominees as well as write-in candidates. The board also approved, pending concurrent change to the Bylaws, amendments that would allow the Nominating Committee greater flexibility in notifying the membership about nominees.

For a copy of the proposed changes, contact Mark Troxel at 206-622-8333. 

About our organization...

The Muni News is published by the Municipal League Foundation, a 501(c)3 non-profit organization that works in conjunction with the Municipal League of King County to provide King County voters and citizens with the resources they need to make informed decisions about civic issues.

The Municipal League is nonpartisan and welcomes all points of view. If you have any question or would like information on joining the Municipal League, call 206-622-8333 or send an e-mail to muni@munileague.org.

Municipal League of King County
810 Third Avenue, Suite 224
Seattle, WA 98104-1614

NON-PROFIT ORG.
US POSTAGE **PAID**
SEATTLE, WA
PERMIT NO. 2207